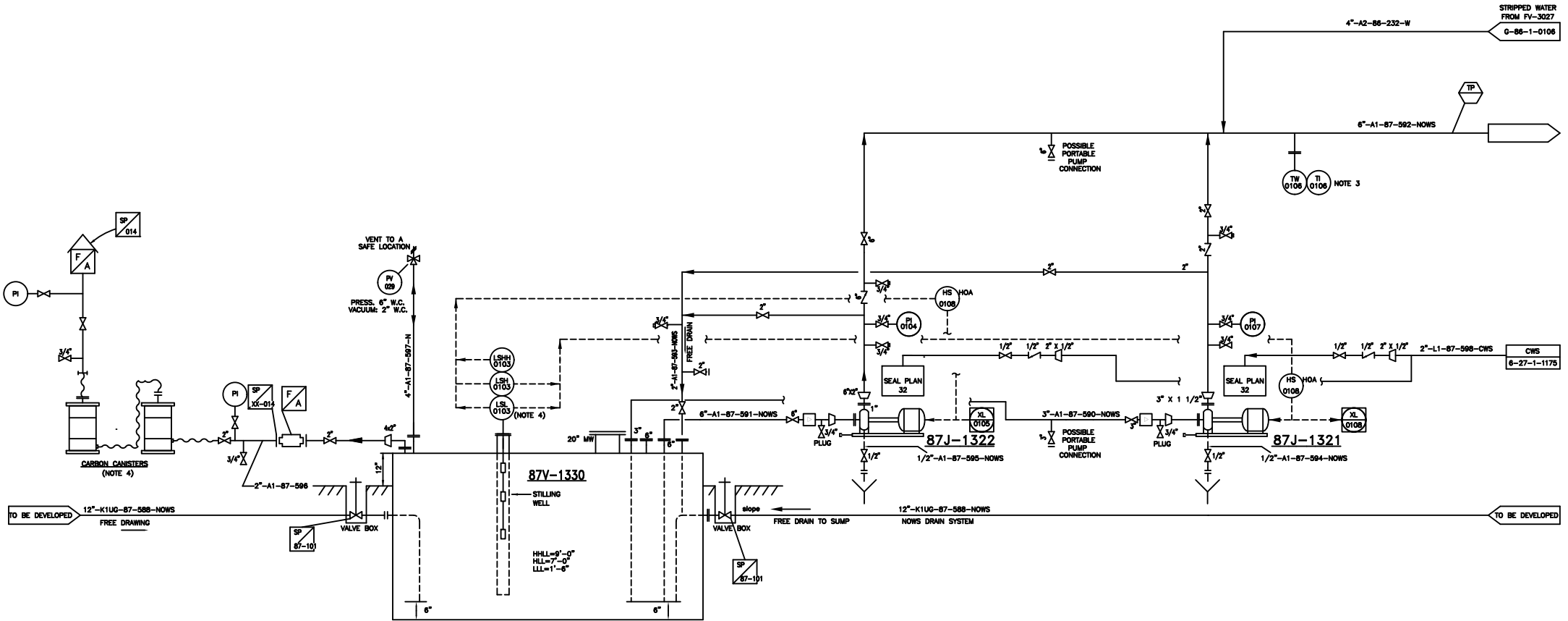


**87V-1330  
NOWS SUMP**

9'-0" ID x 14'-0" T/T  
DESIGN 10 PSIG @ 300°F  
15 PSI EXTERNAL @ 300°F  
TRIM



**87J-1322  
NOWS SUMP PUMP**

DESIGN: 200 GPM  
ΔP: 36 PSI  
HP: 30 @ 1800 RPM  
SP.GR.: 0.99

**87J-1321  
NOWS SUMP PUMP**

DESIGN: 40 GPM  
ΔP: 35 PSI  
HP: 7.5 @ 3600 RPM  
SP.GR.: 0.99

**NOTES:**

1. ALL INSTRUMENTS TAG NUMBERS ARE PREFIXED BY XX.
2. TWO CARBON CANISTERS WILL BE PROVIDED BY MPC.
3. THE TI SHALL BE READABLE FROM GRADE. AT LEAST ONE 90 DEGREE ELBOW SHALL BE BETWEEN THE TI AND THE TIE-IN OF STRIPPED WATER.
4. ON INCREASING LEVEL LSH WILL START LOW CAPACITY PUMP AND LSHH WILL START HIGH CAPACITY PUMP. ON DECREASING LEVEL LSL WILL STOP BOTH PUMPS.
5. ALL ITEMS ON THIS DRAWING ARE NEW.

G-85-1-0112.DWG 06/21/2005 12:01pm zdc21131

NO.	DATE	BY	REVISIONS	CHK.	APP.	NO.	DATE	BY	REVISIONS	CHK.	APP.	REFERENCE DWG.	DESCRIPTION
0	6/19/06	PSF	ISSUED FOR CONSTRUCTION										



<b>MARATHON ASHLAND PETROLEUM LLC</b>		JOB BY: MAB DATE: 12/06/05
		SHE: 18/06/05
PIPING & INSTRUMENT DIAGRAM PRIMARY AMINE UNIT CONDENSATE DRUM & AMINE SUMP		TOTAL: NONE TANK: XX TUB: -85-
		SHE: X TAG: -85- JOB NO: G-87-1-0044 0